



Year 4's News



Courtesy | Kindness | Respect

Year 4's Amazing Work

Year 4 had lots of fun last term, from celebrating World Book Day and taking part in the Lego robotics workshop, to creating some fantastic electric buzzer games in science and the amazing cricket festival.



What are we learning about this term?

In English, we will start by writing a haiku about a volcano. Next, we will read *Mountains of the World* by Dieter Braun to inspire writing a report about mountains. Then, we will learn a poem from *Please Mrs Butler* by Allan Ahlberg before creating our own poem in a similar style.

In our Maths lessons, we will be learning all about fractions and decimals.

In Science, we continue learning about states of matter.

Year 4 Creative Curriculum Theme 5 (Summer Term) Areas of Learning

In other creative curriculum areas this term we will:
Use our Design and Technology and science skills to design, plan and make light-up stage.
In PSHE, we will learn about keeping safe in our local area before moving on to learning about growing up and changing.
In Art, we will take inspiration from the natural world to paint pictures in a similar style to Stephanie Peters who uses natural disasters to inspire her artwork. We will explore using different brush strokes to create different effects.



Is Ilkley Moor a Mountain?



Our place in the world:

We will find out about physical geographical features in our local area. We will explore mountains and where they are in the world.

Fresh Experiences:

We will explore Ilkley Moor and investigate whether it is a mountain or not. This will be an opportunity for children to use their geographical skills in the field.

Equality and Diversity:

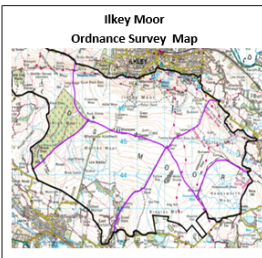
We will explore how people adapt their living to different environments. We will explore famous mountaineers both male and female.

Possibilities:

We will learn about scientists, geographers and environmentalists. We will also explore humankind's relationship with extreme environments e.g., climbers, mountaineers.

Geography

As geographers, we will ask and answer questions about the physical and human features of a location. We will explore the features of mountains and how they are formed. We will use a wide variety of geographical sources to investigate places and patterns. We will use mountains to revisit and refresh our understanding of the water cycle. We will already have studied volcanoes so we will explore these being one kind of mountain.



Mapping skills and field trip

During this unit we will use maps, atlases and digital maps to describe physical and human features. We will use fieldwork to observe and record the human and physical features in the local area using a range of features including sketch maps and plans. Our field work will give us the opportunity to extend our compass and map reading skills using Ordnance Survey maps to explore the local area. We will use contour lines to identify how tall hills / mountains are. We will use grid references to identify specific geographical features on maps.

Ordnance Survey Map Symbols



Upcoming Dates/Events

Mon 4th May: School closed due to Bank Holiday.

School trips: Y4 Field Trip to Ilkley Moor on 19th May

Events: Water Safety by Yorkshire Water on 6th May

Half term: 23rd May – 2nd June

Reading at Holybrook

If your child is on Little Wandle (LW) reading fluency or phonics, they will bring a new fluency book home every other Friday.

On completion of LW fluency, they can choose any book from our classroom book stock to take home as their reading book.

Library: Mondays.

Maths at Holybrook

The **Multiplication Times Table Checks** will take place between **3rd-12th June** after we get back from the half term holiday. Please keep encouraging your child to practice on **Garage** mode. It would be helpful to do a **Soundcheck** at home each week too.

Homework

Homework goes out on 15/4/26 and projects are due in 20/5/26.

PE

PE continues to be on Wednesdays and Thursdays. This term we are studying tennis and athletics.

The Year 4 team is:
Miss Brown, Miss Lee, Mrs. Hawksworth and Miss Powell.

Year 4's Attendance

Regular attendance is essential for every child's success. Being in school every day helps pupils build strong learning habits, keep up with the curriculum, and develop social and emotional skills. Missing lessons can make it harder to catch up and can affect progress over time. By working together to ensure good attendance, we give every child the best chance to achieve their potential. School starts at 8.45am.

Current Whole-School Attendance: 94.2%

Year 4 Attendance: 93.2%

Target Attendance: 96%

Every school day counts

100% Attendance	Superb!
97% Attendance	Good
95% Attendance	Slight concern
90% Attendance	Very concerned
85% Attendance	Local authority intervention

Lateness=Lost Learning		
5 minutes late each day	=	3 days of learning lost
10 minutes late each day	=	6.5 days of learning lost
15 minutes late each day	=	10 days of learning lost
20 minutes late each day	=	13 days of learning lost
30 minutes late each day	=	19 days of learning lost
Our school day, and lessons, start at 8.45am		

